

NATURE PROTECTION AND RELIEF AGENCY

Advocacy . Action . Reality

P.O. Box 83 - 40402, Nyatike, Kenya
Location: Kalangi Centre, along Migori - Sori Road
Tel: +254 754 701 839 | +254 711 991 208
Email: natureprotectrelief@gmail.com

ORGANIZATION
PROFILE



Contents

<i>Background Information</i>	<i>3</i>
<i>Vision, Mission, Core Values.....</i>	<i>4</i>
<i>Objectives</i>	<i>5</i>
<i>Activities</i>	<i>6-10</i>
<i>Achievements and Future plans</i>	<i>11</i>
<i>Level and Area Of Operation</i>	<i>12</i>
<i>Organogram</i>	<i>13</i>
<i>Contact Us On</i>	<i>14</i>



Background Information

Nature Protection and Relief Agency (NAPRA) is a non-governmental, non-profit organization founded in 2021 with the mission to protect natural environments and provide relief services to communities affected by environmental and climate-related disasters.

NAPRA works in vulnerable areas, particularly in Migori County, Kenya, to foster sustainable development, environmental conservation, and disaster risk reduction through advocacy, community engagement, and actionable projects.

NAPRA is dedicated to translating environmental advocacy into real, impactful actions that address climate change, deforestation, bio-diversity loss, and disaster vulnerability. The organization believes in building resilient communities that can adapt and thrive in harmony with their natural surroundings.

NAPRA also supports vulnerable groups threatened by global pandemics such as HIV/-AIDS, Coronavirus, TB, and Malaria, providing bursaries, basic food-stuffs, and health-related support to affected families.



Vision

A world where communities live in harmony with nature, resilient to climate change, environmental, and humanitarian challenges.

Mission

To advocate for environmental protection and sustainable development while providing relief to vulnerable communities affected by global pandemics.



Core Values

Advocacy:

Raising awareness on environmental protection, pandemics, and resource conservation.

Action:

Providing practical solutions to safeguard vulnerable communities.

Sustainability:

Promoting sustainable resource use to benefit current and future generations.

Accountability:

Ensuring transparency and integrity in all operations.



Objectives

Environmental Conservation

Conserve forests, water bodies, and wildlife habitats.

Disaster Relief

Provide immediate and long-term support for communities affected by disasters.

Sustainable Agriculture

Promote climate-smart farming and sustainable livelihoods.

Safe Mining Practices

Advocate for eco-friendly and responsible mining.

Education Awareness

Raise awareness on climate change and mining safety.

Child Protection

Fight child labor, early marriages, and abuse.

Reproductive Health

Support women's health and prevent gender-based violence.

Clean Water Sanitation

Ensure access to clean water and sanitation services.

Activities

Disaster Relief

Immediate response and recovery support for communities affected by natural disasters.

This includes distributing food, water, medical supplies, temporary shelters, and sanitation facilities. Long-term efforts focus on rebuilding homes, restoring infrastructure, and providing psychosocial support to help communities regain stability.



Global Pandemics

NAPRA holds community engagements to educate the public on HIV/AIDS, Coronavirus, Tuberculosis, and Malaria prevention and stigma reduction. The organization distributes food to mitigate malnutrition and supports affected families with psychosocial and nutritional aid.

Activities

Sustainable Mining Practices

Collaborating with local mining stakeholders, NAPRA promotes eco-friendly extraction methods that minimize soil erosion, water contamination, and environmental degradation.

Communities are encouraged to adopt sustainable land-use practices that balance conservation and livelihoods.



Mining Community Support Programs

NAPRA offers training and resources to mining-dependent communities to enhance their safety, provide access to alternative livelihoods, and mitigate social and environmental impacts. Programs include health services, clean water access, and capacity-building activities.



Activities

Conservation Projects

Large-scale tree planting, reforestation, and ecosystem restoration initiatives are undertaken to reverse deforestation and restore degraded lands. NAPRA partners with local communities to ensure the safe extraction of natural resources and protection of wildlife habitats.



Mining Safety Awareness Campaigns

NAPRA conducts workshops to raise awareness about mining safety, focusing on protecting workers, local communities, and the environment. Guidance on safe mining techniques, proper use of protective gear, and emergency preparedness is provided to minimize risks.

Activities

Climate Change Education

Workshops, school programs, and community outreach to raise awareness about climate change, environmental sustainability, and climate resilience.

Programs empower individuals and communities to adopt eco-friendly practices and advocate for policy changes.



Capacity Building

Training communities in disaster preparedness and sustainable livelihoods, such as eco-friendly farming and safe resource management, to enhance resilience against environmental and economic shocks.

Activities

Sustainable Agriculture

Promoting organic farming, agroforestry, and water conservation techniques in rural areas. NAPRA supports communities by implementing rainwater harvesting systems and irrigation solutions to combat changing weather patterns.





Achievements

Distributed emergency relief supplies to over 200 families affected by floods in 2022.

Distributed 5,000 trees seedlings to the communities across degraded forest areas in Kenya.

Implemented water harvesting projects in drought-affected regions, benefiting over 5,000 households.

Provided training on sustainable farming techniques to 1,500 farmers in arid and semi-arid regions.

Conducted over 100 workshops on environmental education, reaching more than 10,000 participants.

Future Plans

Establishing a Nature Protection Training Center to offer capacity building on disaster preparedness and sustainable development.

Expanding reforestation projects to cover an additional 10,000 hectares of degraded land by 2025.

Developing a community-based eco-tourism initiative to promote conservation and create sustainable livelihoods for local communities.

Construction of children and women health care facility to improve accessibility and sustainable health services to the communities.

Establish a rescue and rehabilitation centers to retain and nurture victims of child-abuse and Gender-Based violence.

Construction of a Community food-store for easier and distribution of foodstuffs during emergencies

Level and Area Of Operation

NAPRA operates regionally as a Community-Based Organization in Migori and parts of Homa-Bay counties, Kenya.

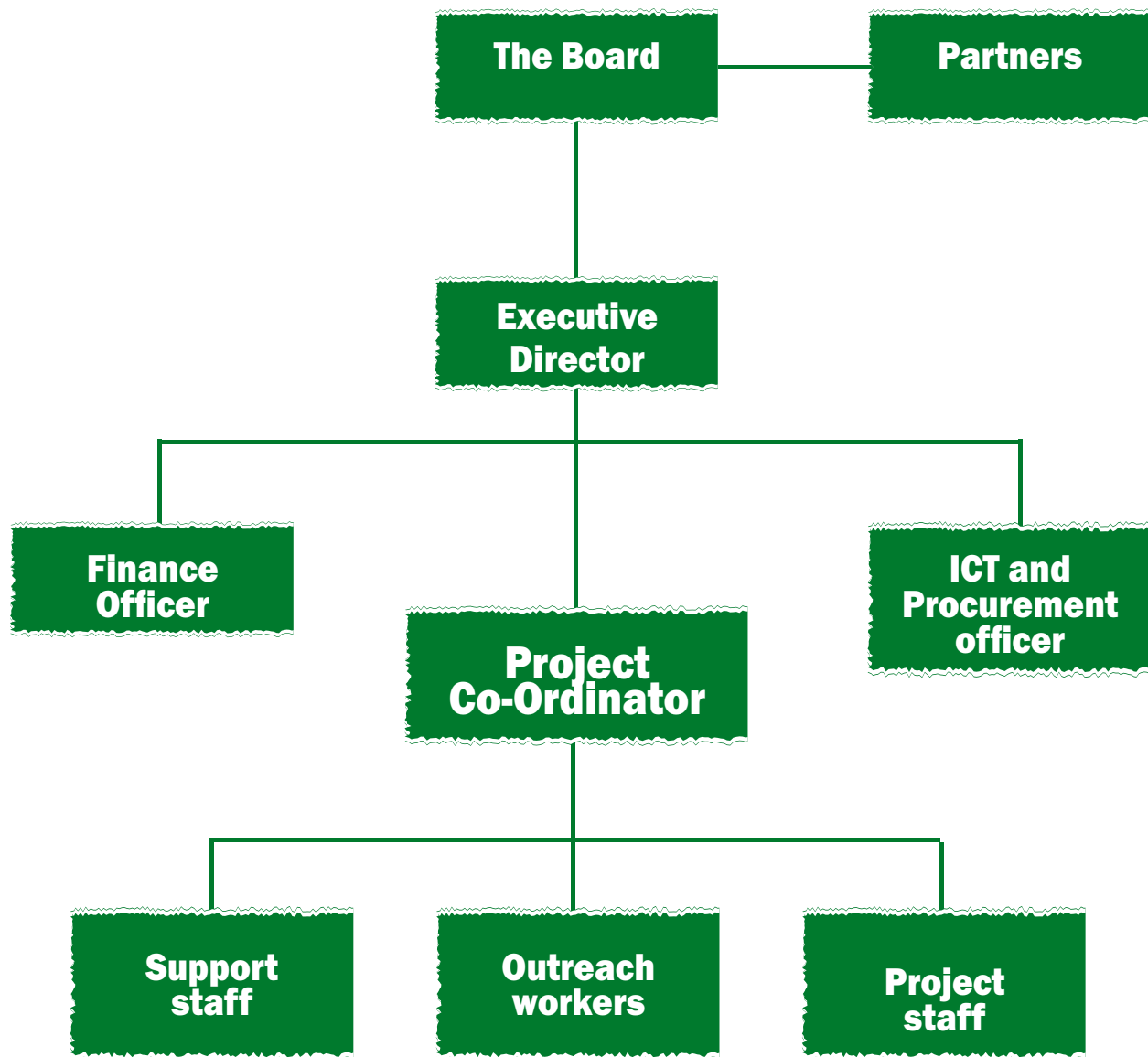


Target Group

Communities in high-risk environmental areas, such as flood-prone, semi-arid, and mining regions, with a focus on vulnerable populations like women, children, and youth.



Nature Protection And Relief Agency Organogram





ADVOCACY . ACTION . REALITY

P.O. Box 83 - 40402, Nyatike, Kenya

Location: Kalangi Centre, along Migori - Sori Road

Tel: +254 754 701 839 / +254 711 991 208

Email: natureprotectrelief@gmail.com